

ATILIM ÜNİVERSİTESİ

GSTMF | MİMARLIK BÖLÜMÜ- 2022-2023 GÜZ AKADEMİK YARIYILI

MMR 401 | Mimari Tasarım V

Emel Akın . Mete Öz

Aytek İtez. İlhan Kural

Nami Hatırlı. Aytaç Özen

MMR 401 | Mimari Tasarım V

TARİHİ ÇEVREDE KENTSEL-KÜLTÜREL ODAK ve TURİSTİK KONAKLAMA KOMPLEKSİ

Farklı tarihsel süreçlerin, bir başka ifadeyle, tarihsel katmanlaşmanın (henüz) okunabildiği Ulus-Ankara Kalesi çevresinde kamusal kullanıma açık bir mimari proje üretilmesi istenmektedir.

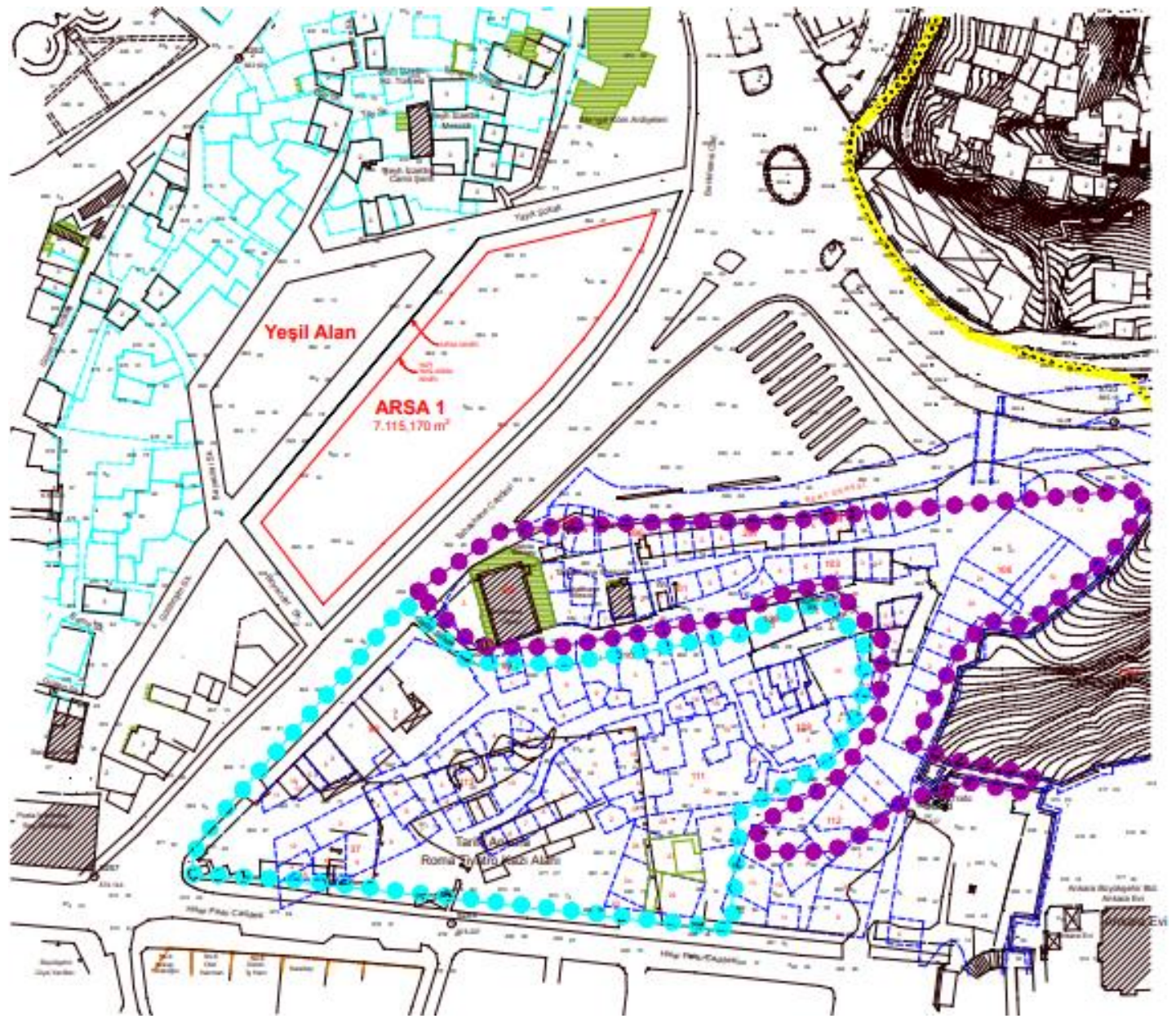
Tasarım alanının kamusal kullanıma açılarak alanın kentin gündelik/sosyal yaşamına katılması, kültürel ve sosyal bir odak alanı yaratılması, kamusal hareketliliğin ve sürekliliğinin sağlanması beklenmektedir.

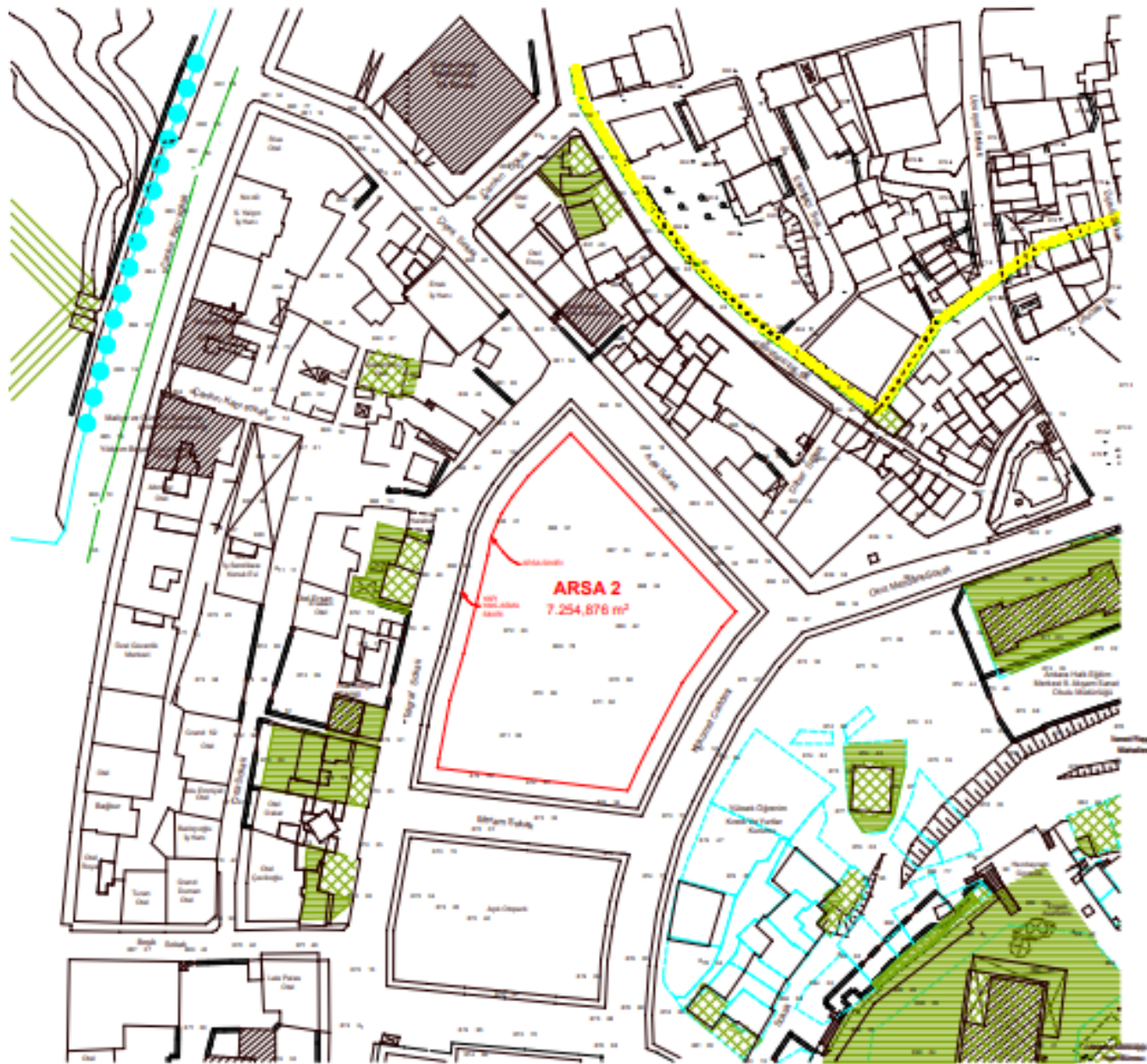
Yaklaşık 10.000 m²'lik yapı kompleksinde, Butik Otel ile Ana İşlev 2'de belirtilen işlevlerden birisinin mimari projesi yapılacaktır.

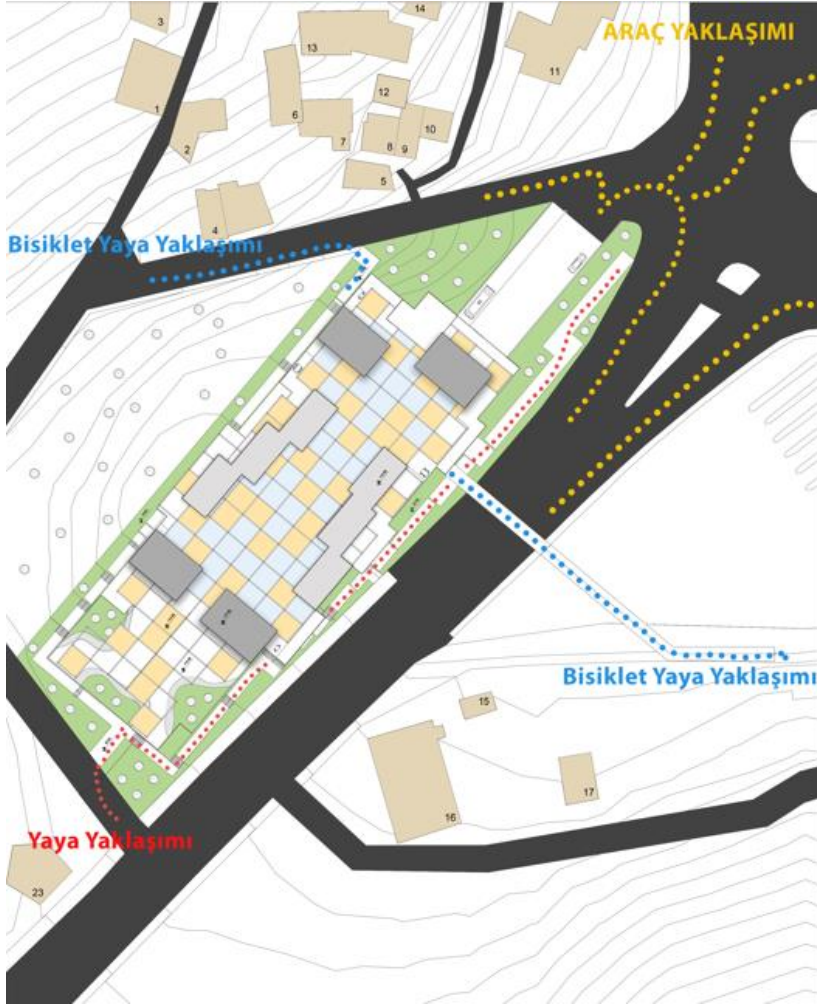
ANA İŞLEV 1: Butik Otel: min. 15 oda - max. 30 oda (Butik otel, tanımı/içeriği gereği özel/özgün bir temaya-tasarıma sahip olmalıdır.)

ANA İŞLEV 2: Butik otelin yanısıra,

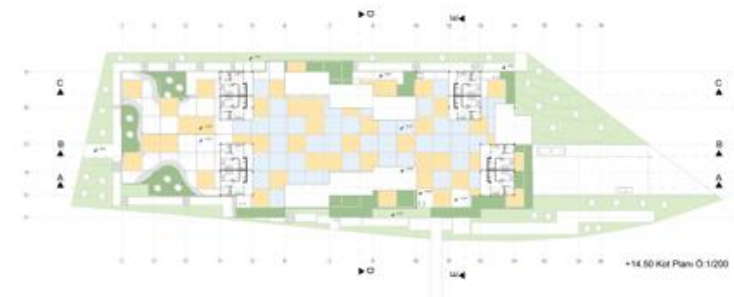
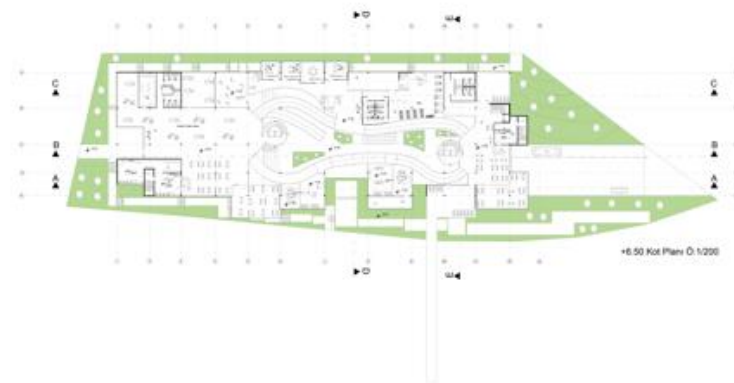
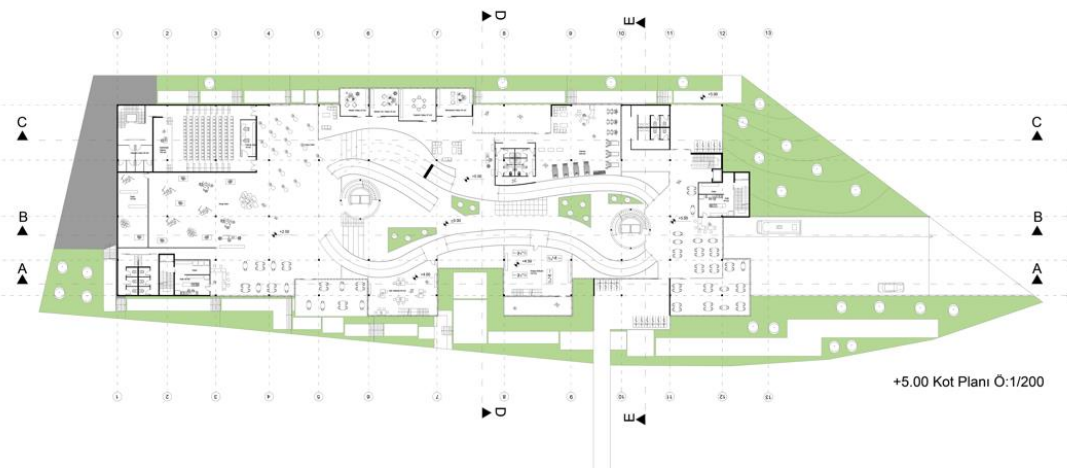
- Gastronomi ve Yemek Sanatları (yeme içme mekânları, eğitim, gösteri-müze) işlevi seçilebilir veya
- Sanat/Kültür Yapılarından (sinema, tiyatro, kent müzesi, müzik müzesi, sanat müzesi, sinema müzesi, performans sanatları) kapsamına/büyüklüğüne göre birisi veya ikisi seçilebilir.
- Farklı bir işlev önerilebilir.

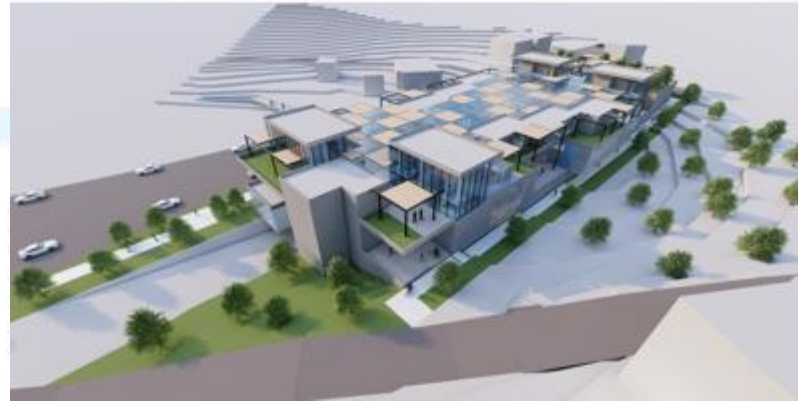
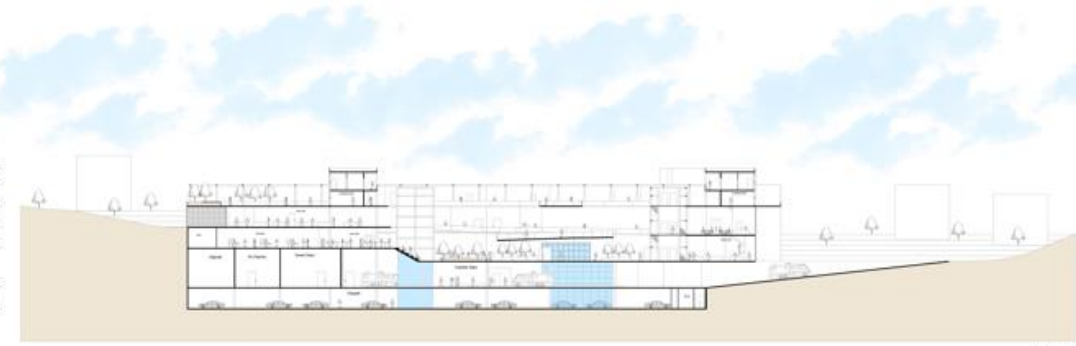


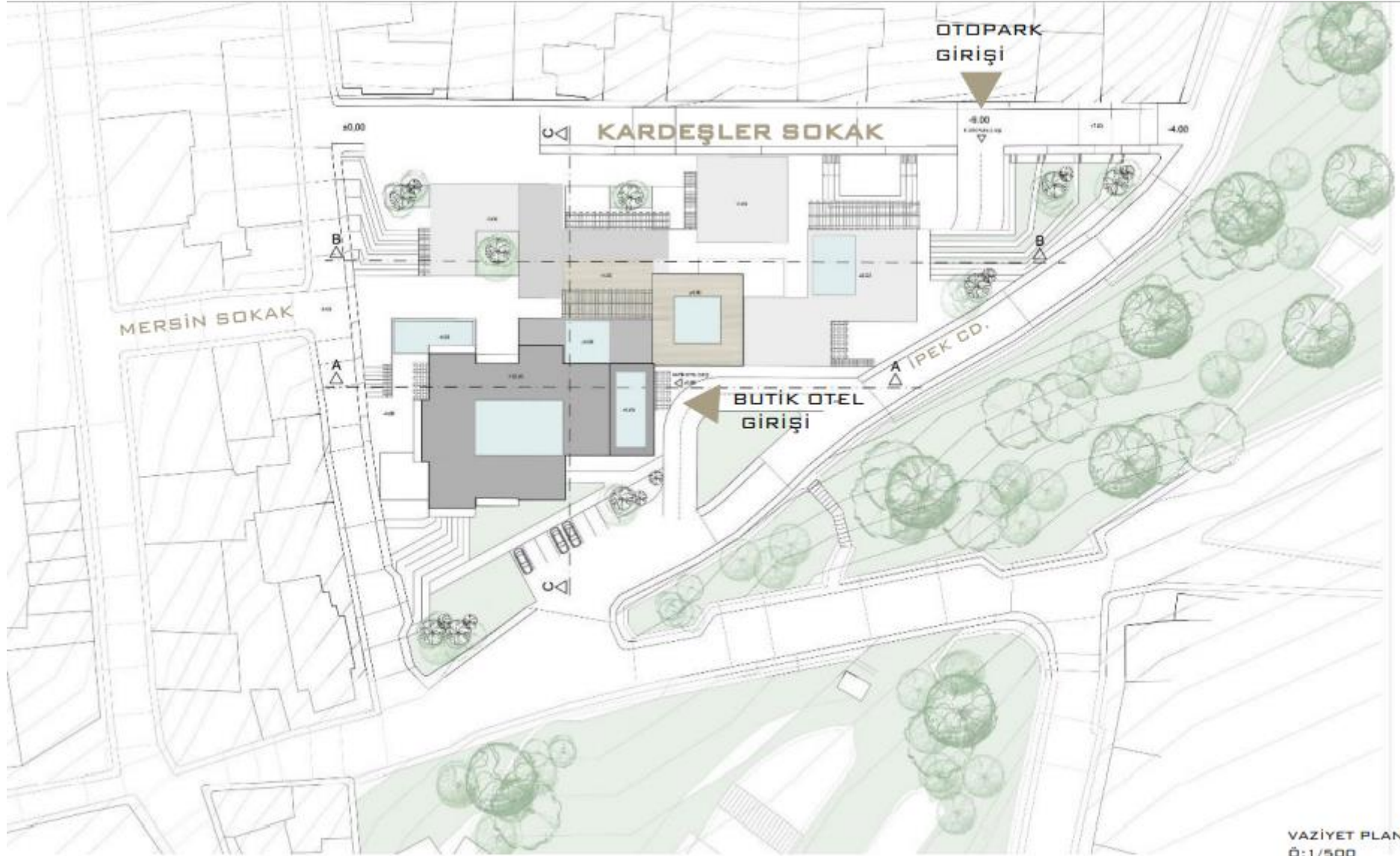


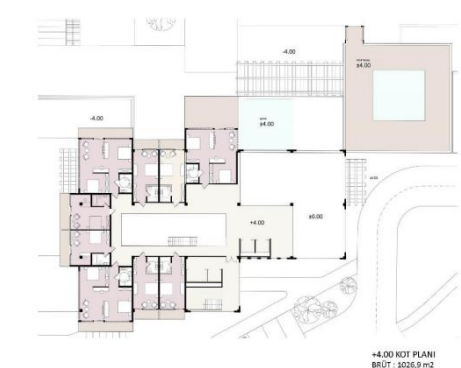
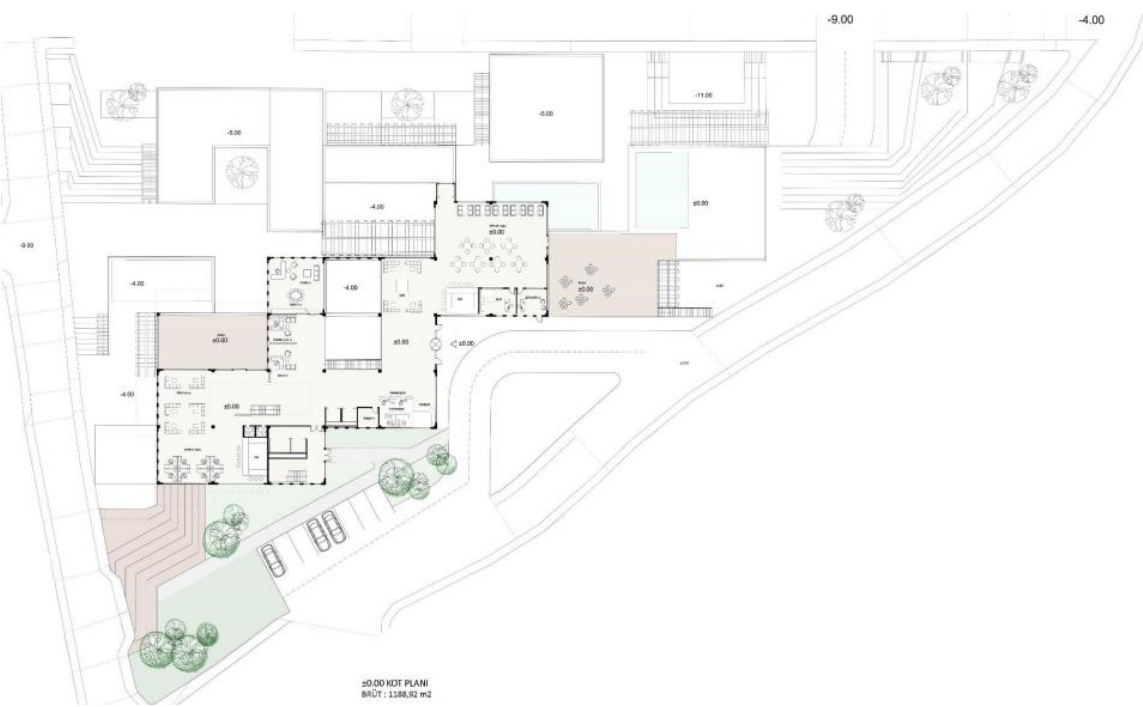


(BA) | 401 | Emel Akın. Mete Öz



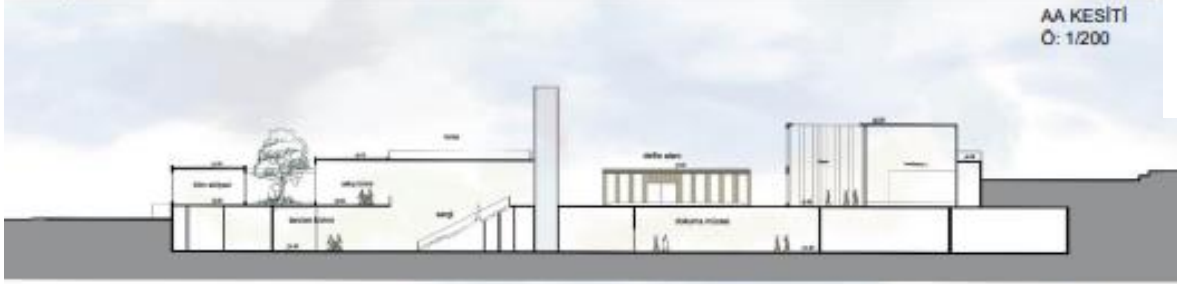




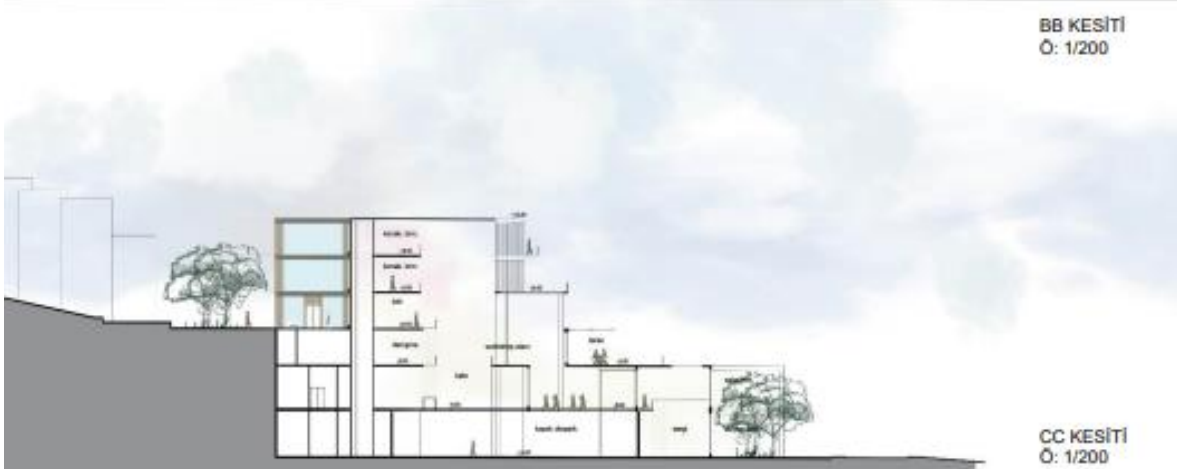




AA KESİTİ
Ö: 1/200



BB KESİTİ
Ö: 1/200



CC KESİTİ
Ö: 1/200

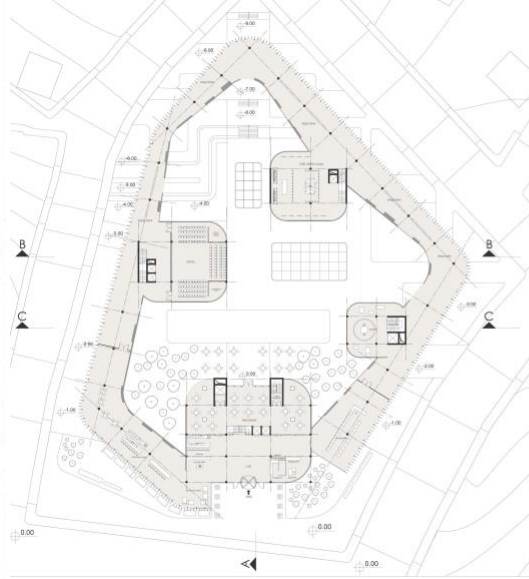


KUZEBATİ CEPHESİ

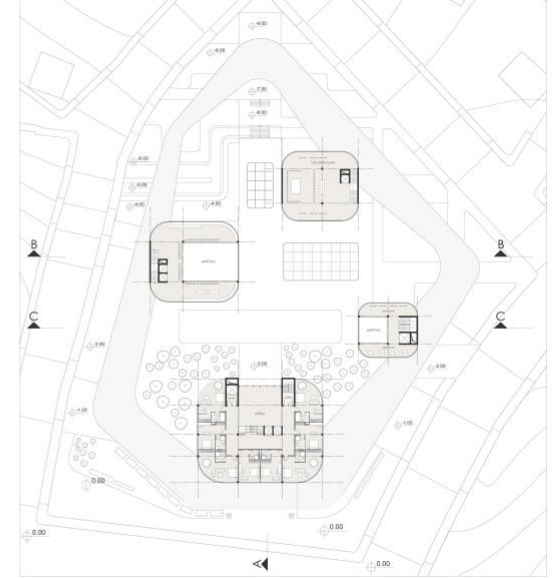


KUZYOĞLU CEPHESİ

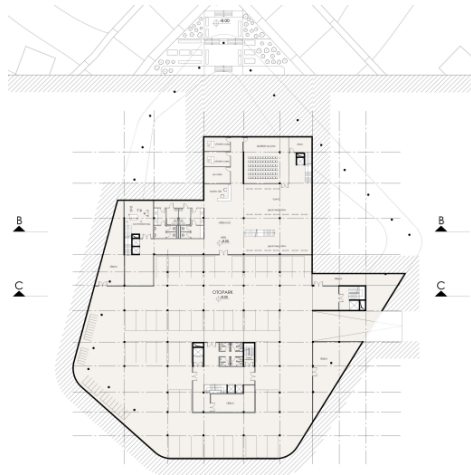




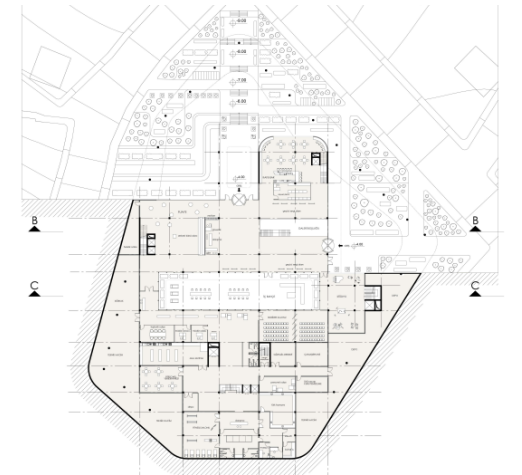
0.00 KOTU PLANI Ö:1/200



+4 KOTU PLANI Ö:1/200

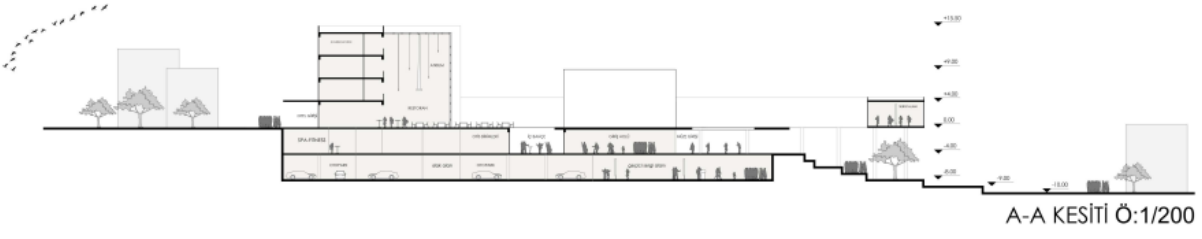


-8 KOTU PLANI Ö:1/200

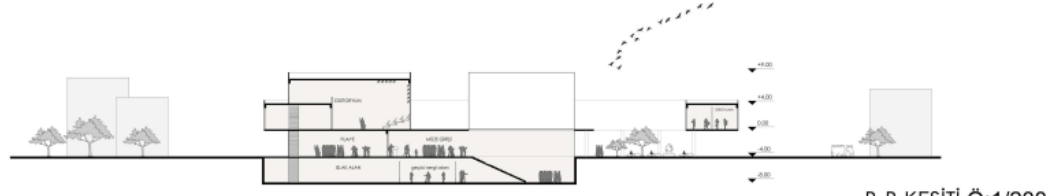


+4 KOTU PLANI Ö:1/200

(BB) | 401 | Aytek İtez. İlhan Kural



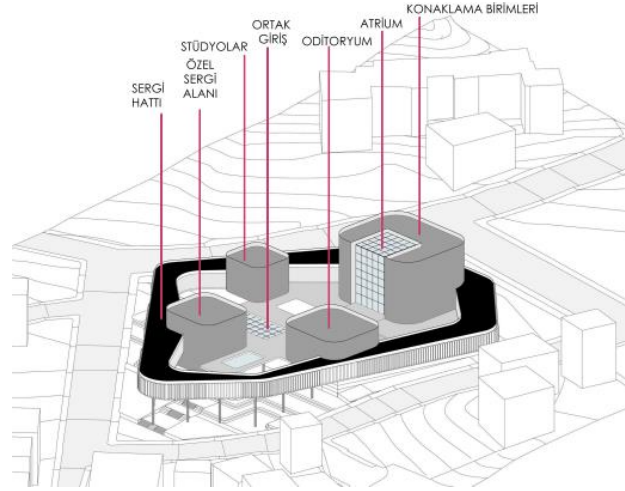
A-A KESİTİ Ö:1/200



B-B KESİTİ Ö:1/200



C-C KESİTİ Ö:1/200



KUZEY CEPHESİ Ö:1/200

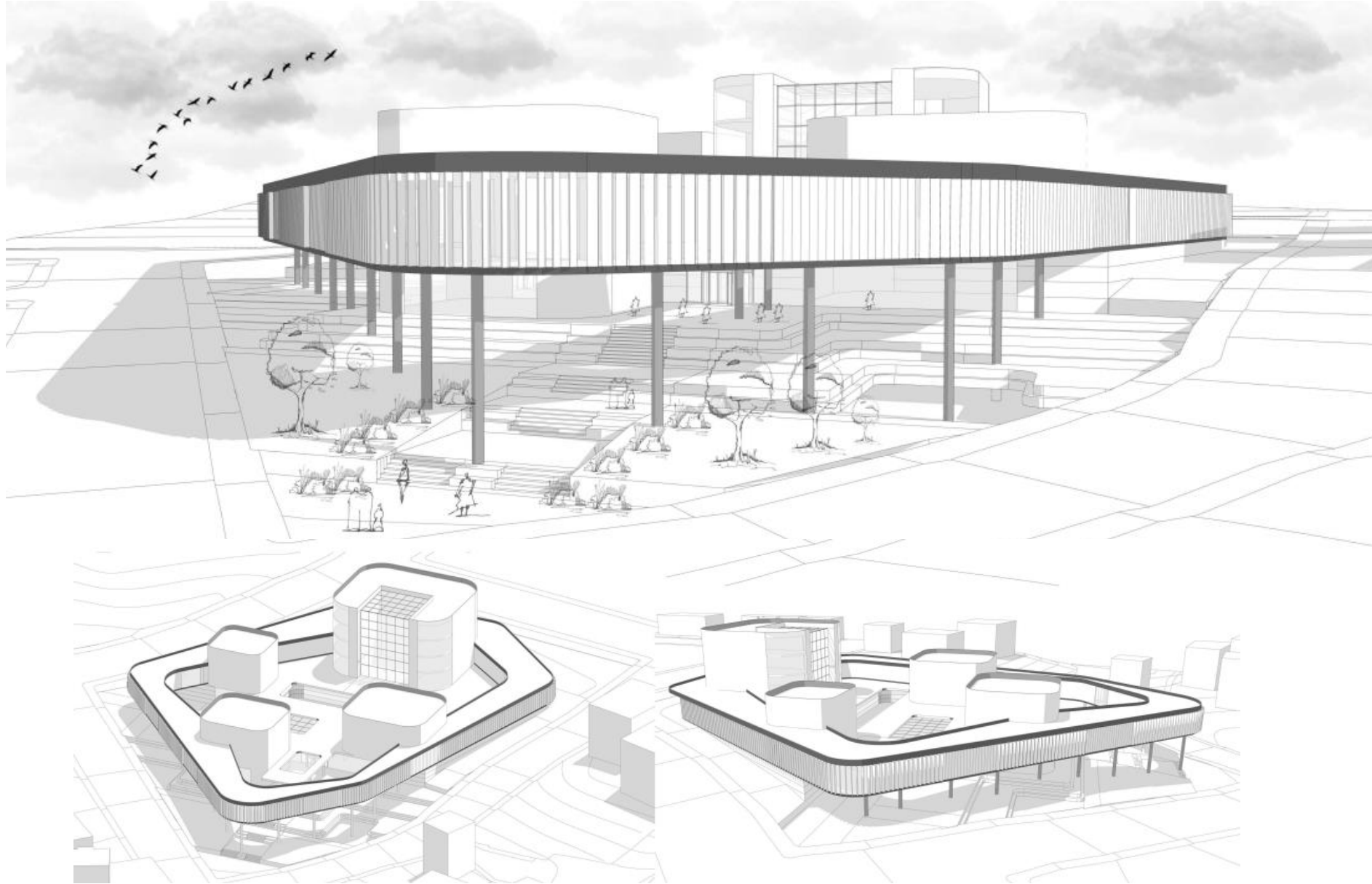


DOĞU CEPHESİ Ö:1/200

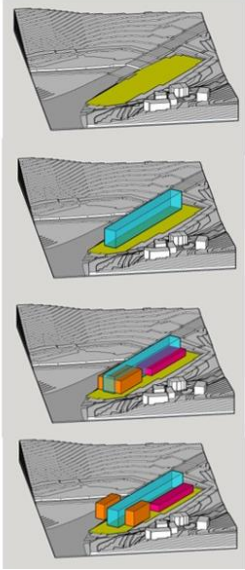


GÜNEY CEPHESİ Ö:1/200

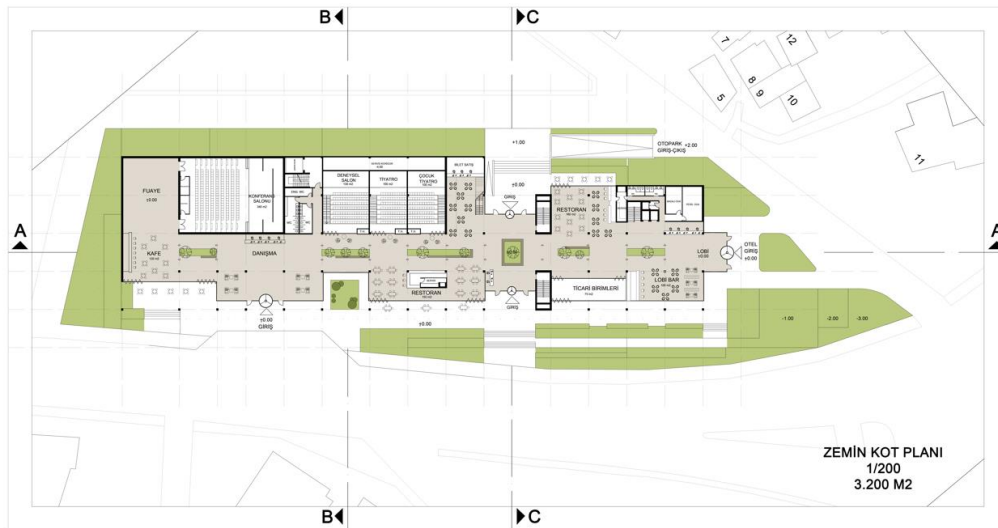


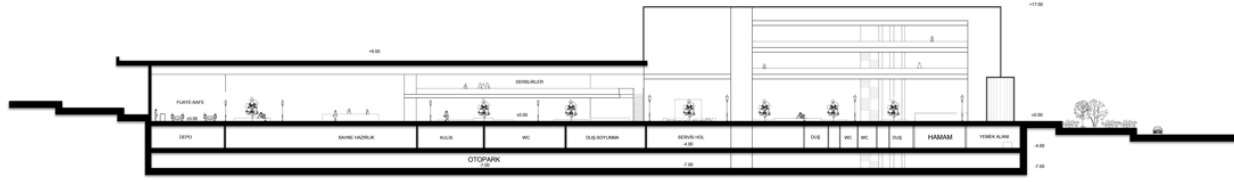


KÜTLE OLUŞUM DİYAGRAMI

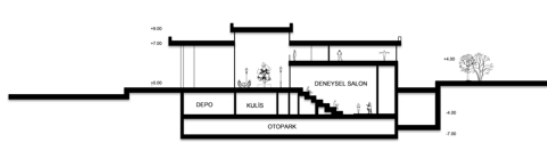


- BUTİK OTEL
- PERFORMANS SANATLARI (TİYATRO)
- FUAYE

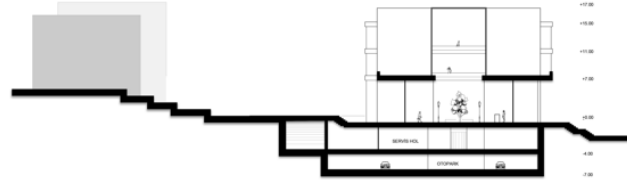




AA KESİT
1/200



BB KESİT 1/200



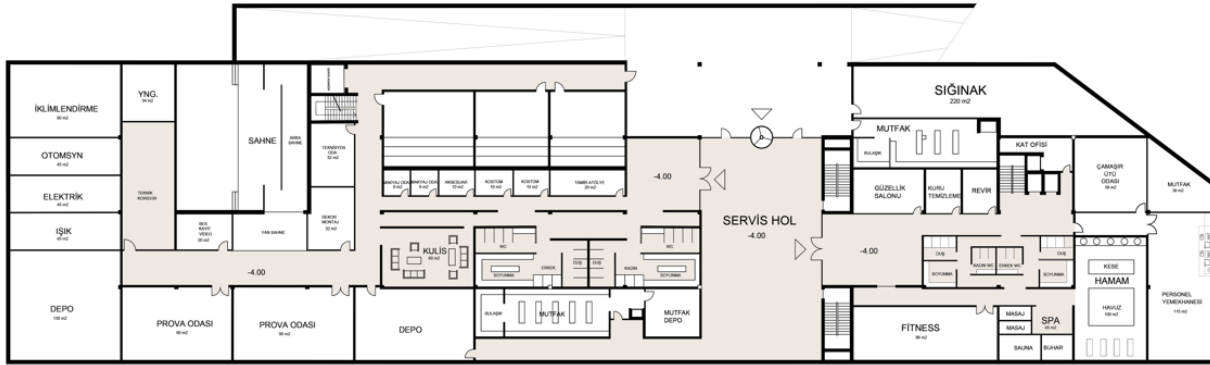
CC KESİT 1/200



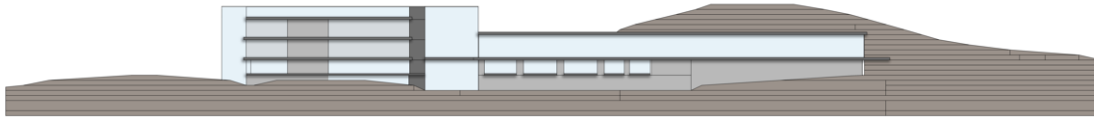
+11.00 KOT PLANI
1/200
700 M2



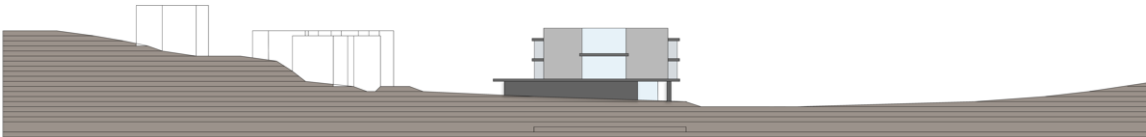
+7.00 KOT PLANI
1/200
700 M2



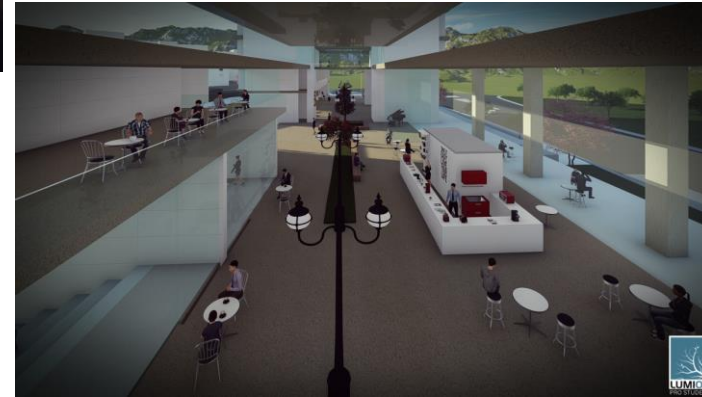
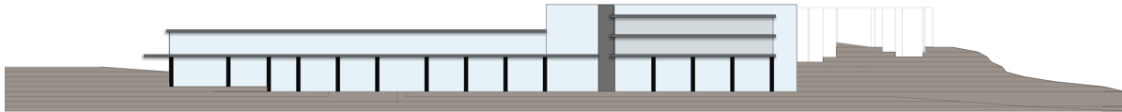
-4.00 KOT PLANI
1/200
3.400 M2



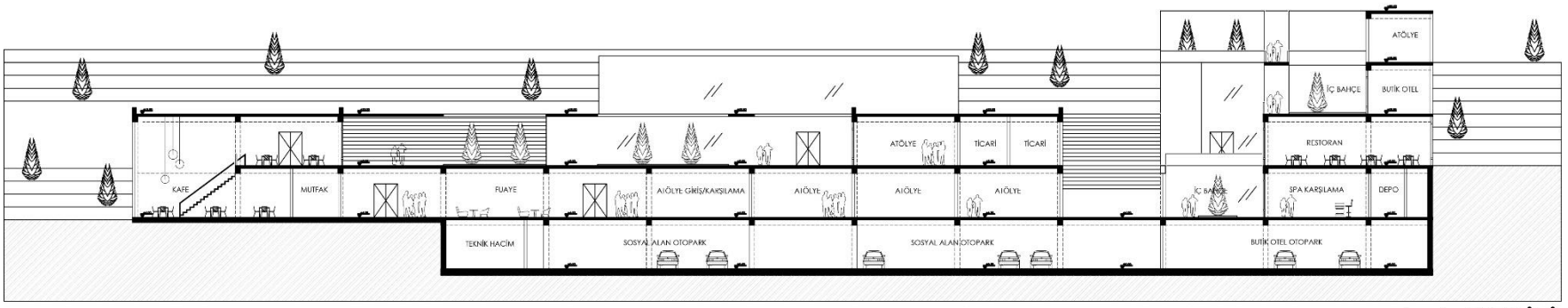
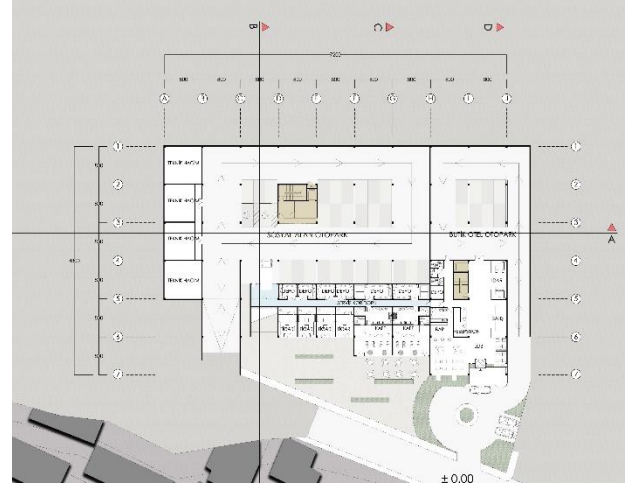
KUZEY-BATI GÖRÜNÜŞ
1/200



GÜNEY-DOĞU GÖRÜNÜŞ
1/200

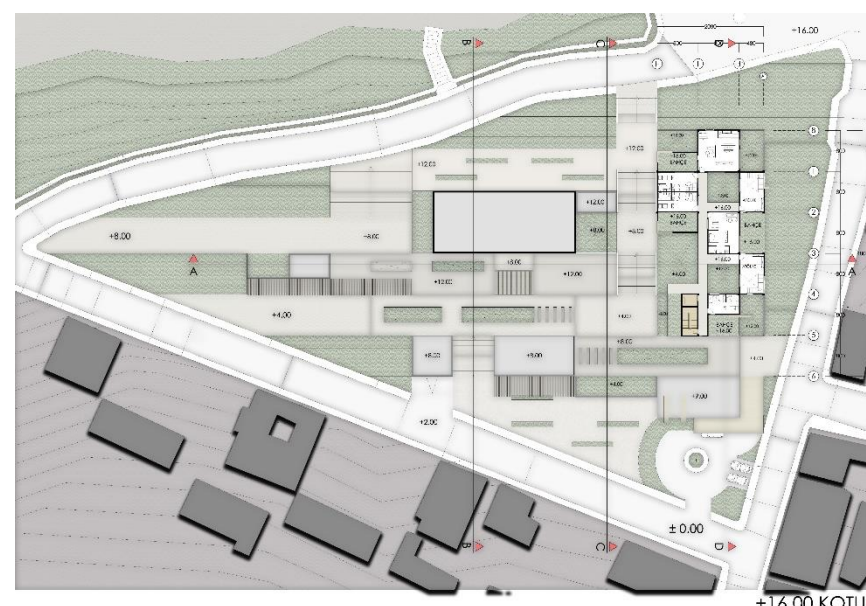
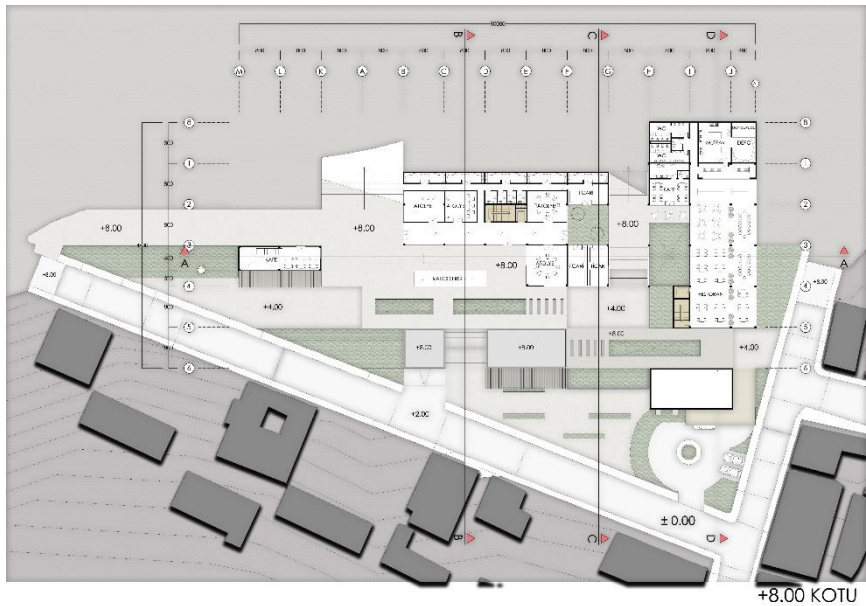
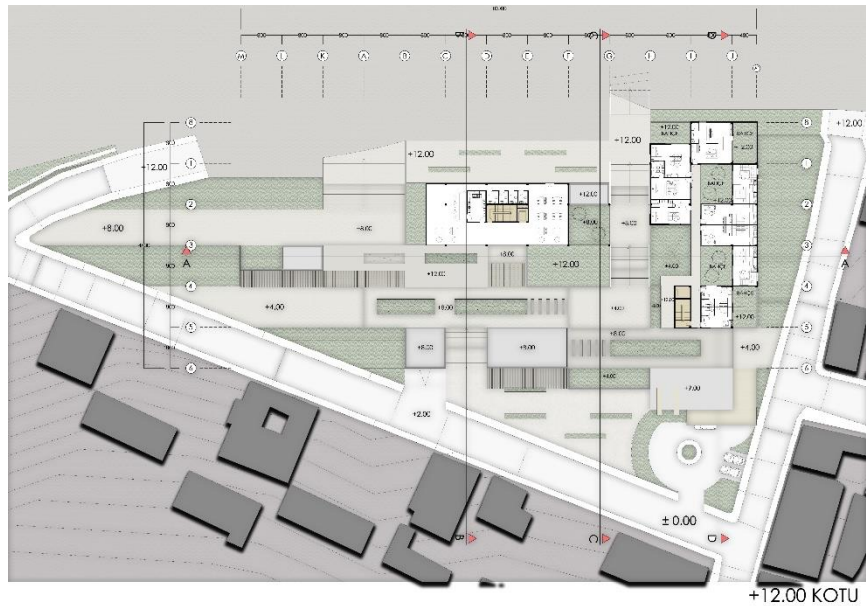
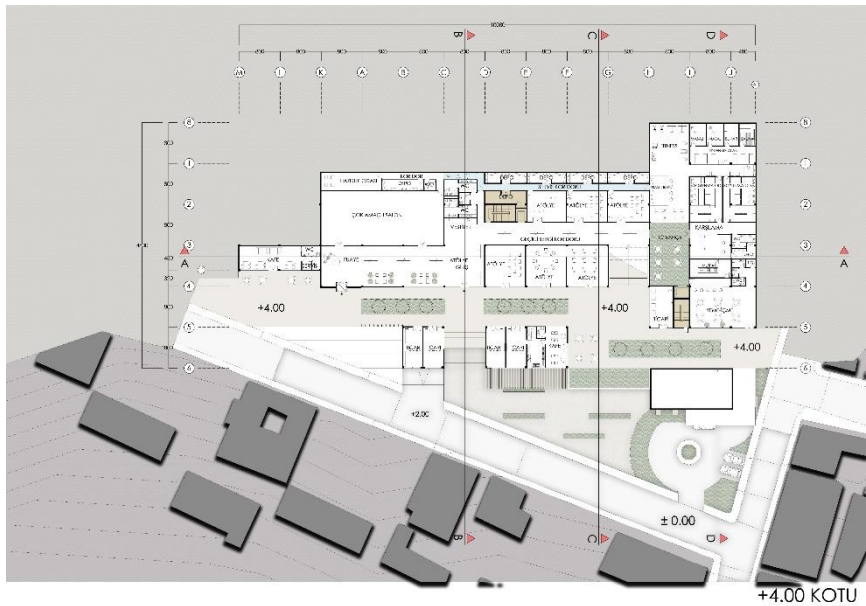


(BB) | 401 | Nami Hatırlı. Aytaç Özen

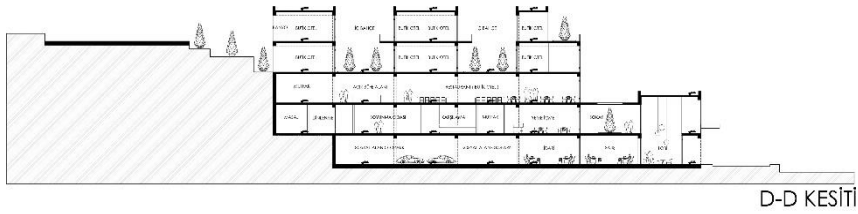
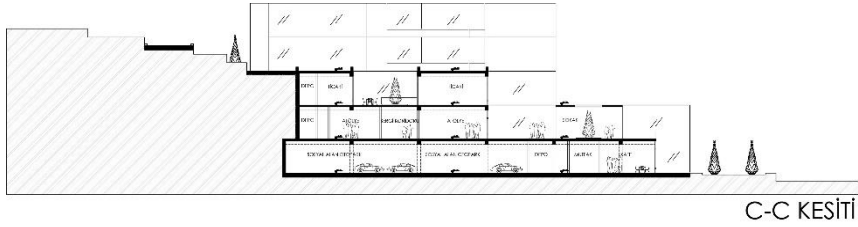
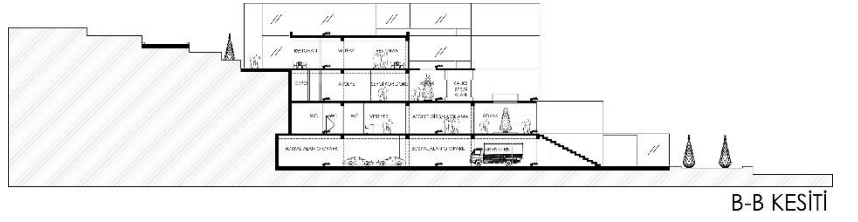


A-A KESİTİ

(BB) | 401 | Nami Hatırlı. Aytaç Özen



(BB) | 401 | Nami Hatırlı. Aytaç Özen





VAZİYET PLANI ÖLÇEK : 1/500



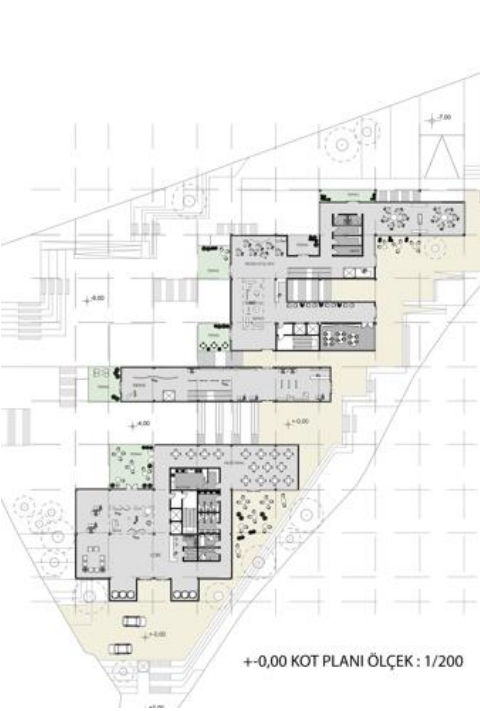
A-A KESİTİ ÖLÇEK : 1/200



KUZAY - BATI CEPHESİ ÖLÇEK : 1/200



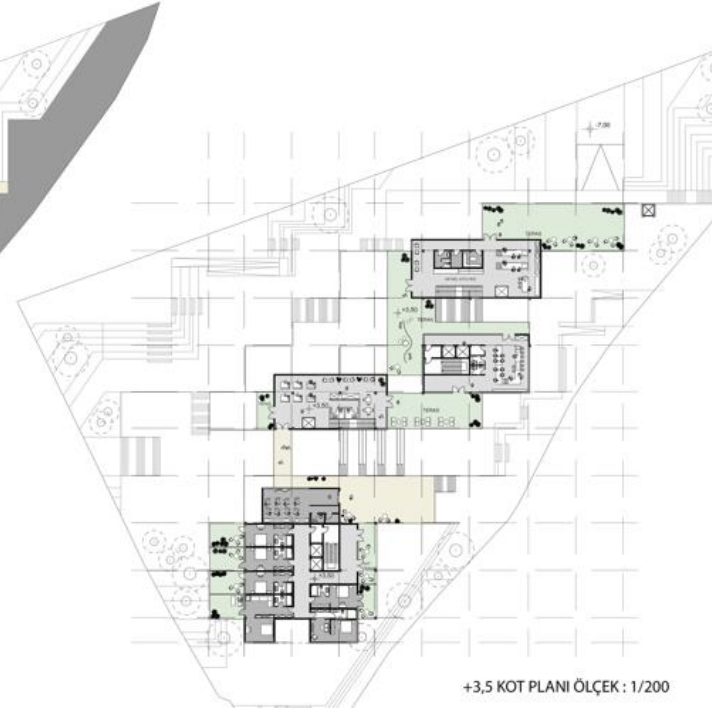
GÜNEY - DOĞU CEPHESİ ÖLÇEK : 1/200



+0,00 KOT PLANI ÖLÇEK : 1/200



-4 KOT PLANI ÖLÇEK : 1/200



+3,5 KOT PLANI ÖLÇEK : 1/200



B-B KESİTİ ÖLÇEK : 1/200



KUZAY DOĞU CEPHESİ ÖLÇEK : 1/200